

UNRA LAYS PLAN TO REDUCE TRAFFIC ON ENTEBBE ROAD

BY SAMUEL BALAGADDE

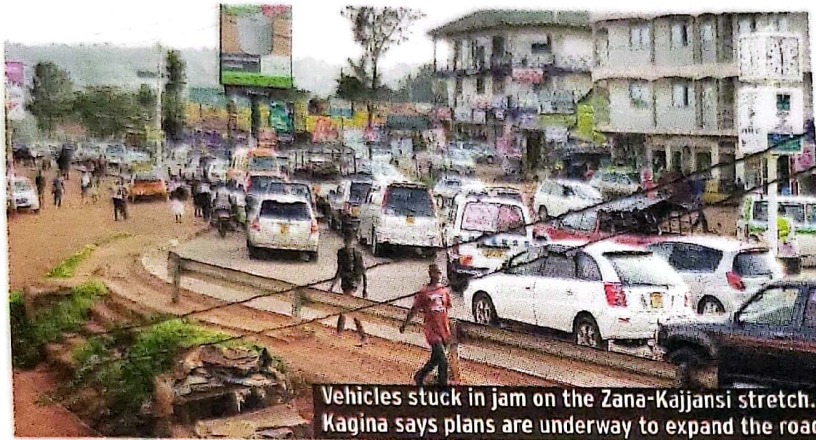
The chronic traffic jam on the Kampala-Entebbe highway is being mitigated with several interventions.

The pre-supposed 45-minute drive for the 40km from Kampala to Entebbe currently takes between two and three hours, depending on the time of travel.

The planned widening of the Zana-Kajjansi stretch of 5km by the Uganda National Roads Authority (UNRA) is expected to improve traffic flow.

Allen Kagina, the UNRA executive director, said consultancy for the detailed designs for the upgrade of 189km roads, including the Zana - Kajjansi stretch, are ongoing.

Zana roundabout, with a busy turn



to Nalukolongo and Bunamwaya, is one of the areas along this road that cause traffic congestion.

Opening the Entebbe Expressway

to traffic next year is also expected to reduce traffic congestion on this busy road to the airport.

Kagina said the tolled Entebbe

Expressway, with a spur at Kajjansi connecting to Munyonyo and to the proposed Southern Bypass, will greatly accelerate traffic flow to and from Entebbe and surrounding areas.

UNRA's intervention on Entebbe Road comes at a time when the works ministry is upgrading the 10.12km Namasuba-Ndejje-Kitiko road in Makindye-Sabagabo municipality, Wakiso district to tarmac.

BUSAABALA ROAD

The road, with a connection to Busaabala, is being upgraded to tarmac up to Kigo, including the Lufuka water-logged valley.

This is expected to further relieve Entebbe road of traffic jam as the road offers one of the major traffic diversions.

Traffic jam on Entebbe Road tempts those heading to Entebbe airport for flights to speed in sections where there is no traffic jam, resulting in accidents.

Dr Stephen Kasima, the director of traffic and road safety, said they have made several interventions, including deployment of traffic Police officers during peak hours. He appealed to motorists to be more responsible.

Matia Lwanga Bwanika, the Wakiso district chairperson, said other access roads are being upgraded to ease traffic flow. These include the Seguku-Katale-Naggala road that connects Entebbe Road to Kampala-Masaka highway.

He said travellers from Entebbe to Masaka, western Uganda or Rwanda will not have to go through Kampala as has been the case.