



To use power. National Cement factory that is currently under construction in Tororo Municipality. COURTESY PHOTOS

Umeme invests Shs14b in new power substation

Preparations. As new factories rush to open shop in Tororo, Umeme is making the requisite preparations in investments in anticipation of the projected increase in demand.

BY REBECCA RWAKABUKOZA
editorial@ug.nationmedia.com

TORORO. Tororo District has of recent seen an influx of industries setting up in the area.

This year, National Cement, Simba and Hima Cement are expected to start production.

Both cement factories have a projected power demand of 20 megawatts (MW) with respective demand of 12MW and 8MW

The already existing Tororo Cement Industries has also expanded and increased its production capacity.

As more entrepreneurs rush to open businesses in Tororo, the demand for power is expected to increase as both domestic consumers and industries will be relying on the same source of power.

This has prompted Umeme to invest up to \$3.88m (about Shs 14b) into setting up a new substation at Nyakesi in order to boost electricity production in Tororo Industrial Park.

Civil works at the project that was contracted to Global Network Ltd are

tion in the area through reliable power supply. Currently, Tororo Industrial Park has Hima Cement and National Cement Industry that need a total of 20 Mega Volt Ampere (MVA).

The two industries are currently supplied by a temporary line with a capacity of 10 MVA.

According to the Umeme manager for Tororo, Doreen Ogenga, the district has about 19,000 customers with about 80 per cent being domestic consumers.

"If you look at the revenue split, if you work out the numbers, more than 70 per cent of our power is consumed by industrial consumers. It is fundamental that when the new generation comes on board, we concentrate on large consumers. We need big industries to take up this power," Mr Selestino Babungi, the Umeme managing director said.

PROJECT DETAILS

Investment. Umeme has invested up to \$3.88m (about sh14b) into setting up a new substation at Nyakesi, an investment that is tipped to boost industrialisation in the area through reliable power supply.

He added: "As a country, to model for the new generation, we should model it around industrial and commercial consumers because when you use power for industrial development and commercial consumption, it will lead to job creation and economic development, which puts money in the pockets of households. That is why we are advocating for industrial development, commercial production, value addition and cottage industries."

He said Nyakesi substation will boost the supply.

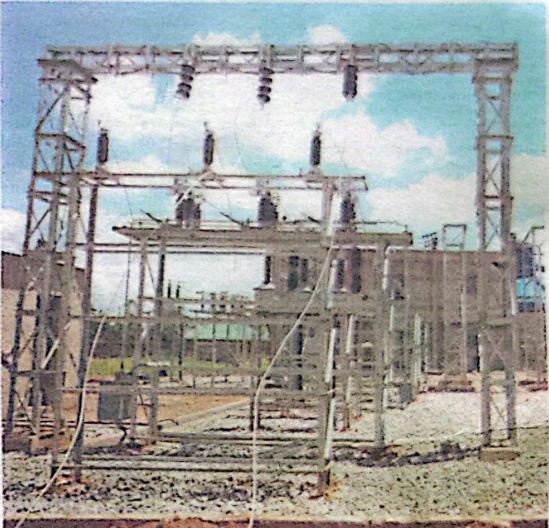
Mr Job Watt, the project manager said the transformers are enroute from Mombasa.

"We have prepared for the current ones and have some room to supply more. As the industrial park grows, if this is insufficient, we would get more transformers. But right now, the industries can get started. The plant will have two lines to increase reliability. When one line is off, the other will be on," he said.

Nyakesi will also have a line to Tororo Cement Ltd.

Tororo Cement, according to the company executive director, Mr Brij Gagani, pays Shs4b to Umeme every month.

"Tororo Cement needed more power with our new plant. The expansion will increase company produc-



Facility. The substation at National Cement factory that shall be fed by Umeme distribution line from Nyakesi substation.



In progress. Workers doing civil works at Nyakesi substation in Tororo Municipality.